



# Nair Innovations, Inc.

We specialize in providing the following services to the oil & gas industry  
**E&P Consulting ★ Recruiting Services ★ Well Log Digitizing**

8884 Whitney Drive, Lewis Center, Ohio 43035  
Office: 614.707.7107 Fax: 209.755.7107

E-mail: [sales@nairinnovations.com](mailto:sales@nairinnovations.com)  
Website: [www.nairinnovations.com](http://www.nairinnovations.com)

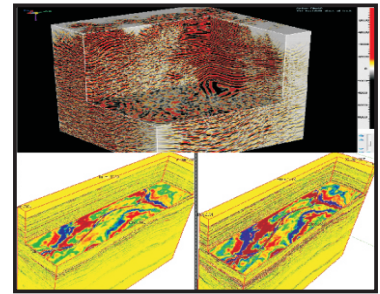


# E & P Consulting Services

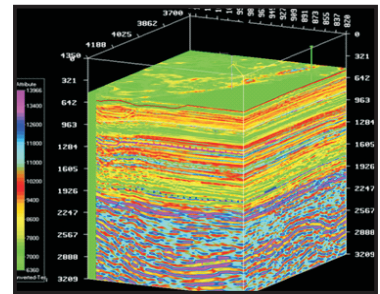
## GEOLOGY & GEOPHYSICS

### 2D/3D Seismic Data Processing Services

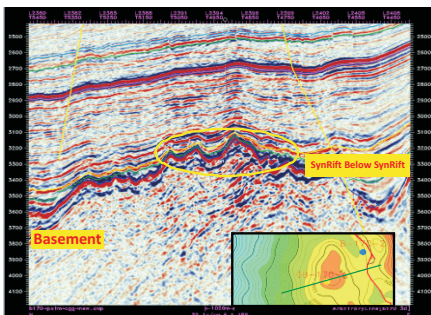
- Seismic data copying/Digitization/Transcriptions/Scanning etc.
- Pre stack merging of vintage land & offshore data
- Seismic data acquisition QC
- Seismic data conditioning and noise attenuation
- 2D/3D pre stack time migration (PSTM) - land and offshore data
- 2D/3D pre stack depth migration (PSDM) - land and offshore data
- Post stack and pre stack inversion
- Avo processing



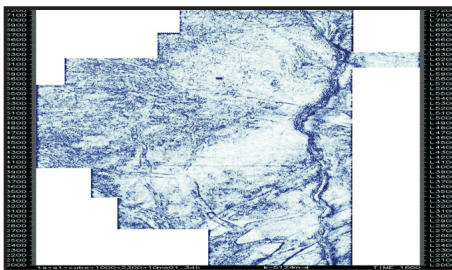
3D Offshore PSDM volumes from Gridded / Layered Earth



Post Stack Inversion



RC showing the Synrift Structure



Fault Picking on Coherency Time Scale - Coherency time slice at 1600 ms showing strike slip and normal faults.

### Well Log Analysis

- Log editing and conditioning
- Log co-relation
- Petro-physical evaluation

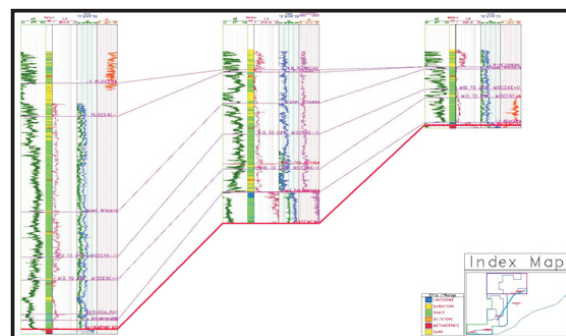
## RESERVOIR STUDIES

### Pressure Transient Analysis

- Deliverable capacity of the well
- Hydrocarbon reservoir estimation through volumetric
- Determination of decline of production rate with reservoir depletion
- Determination of the skin factor
- Mobility of the fluid ( $k/\mu_o$ )
- Radius of investigation
- Determination of reservoir compartmentalization/boundary if possible

### Geophysical Interpretation

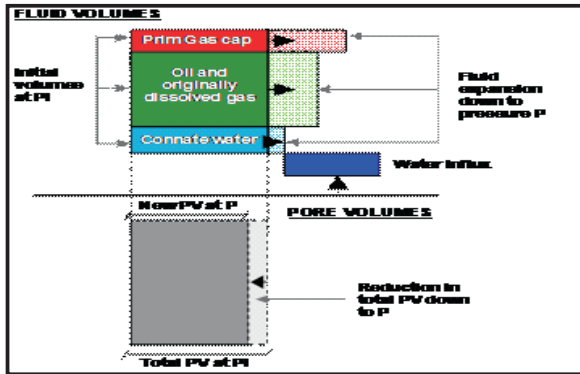
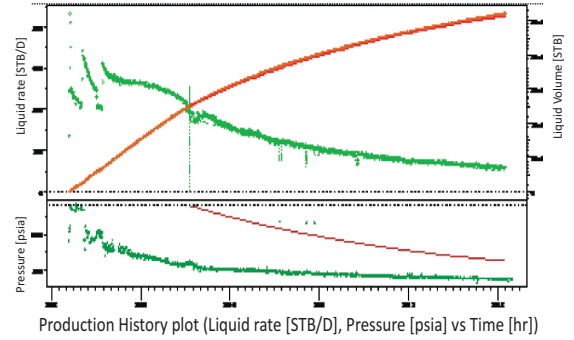
- Fault correlation
- Preparation of fault pattern map
- Seismic data calibration (with well data)
- Seismic sequence analysis
- Seismic attributes analysis
- Fault seal analysis
- Preparation of time and depth maps
- Preparation of isochronopachs and time structural/relief maps
- Preparation of facies maps
- Integration & interpretation of G-M data
- Prospect identification
- Reserve estimation
- Preparation of prospect maps





### Rate Transient Analysis

- Match between model and data would yield reserve estimates, drainage area, reservoir boundaries
- Forecast generation is possible using anticipated flowing bottomhole pressure. This can be done for all the three phases if needed
- Decline trend for any well type can be used to generate field profile

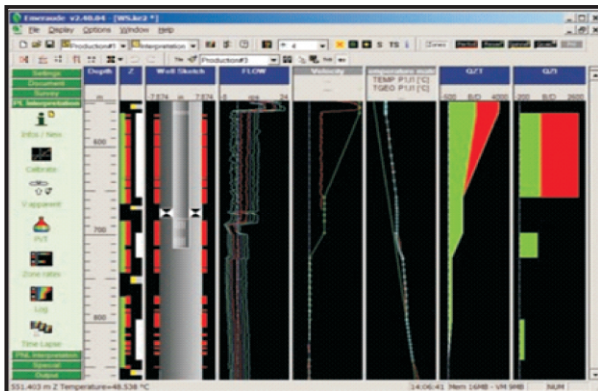
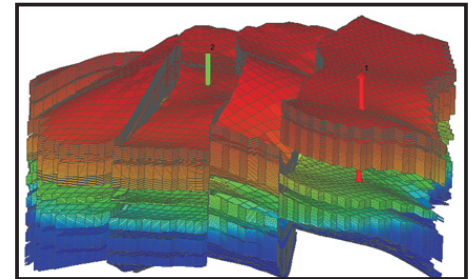


### Material Balance Studies

- Estimating initial hydrocarbons in place
- Predicting future reservoir performance
- Estimating water influx
- Analyzing drive mechanism
- Predicting ultimate hydrocarbon recovery under various primary drive mechanisms

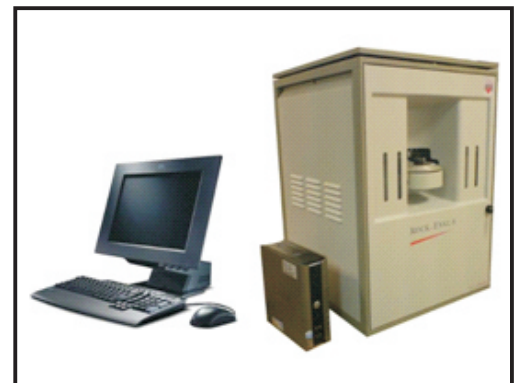
### Reservoir Simulation

- Preparation of robust static model incorporating all available information
- History matching
- Performance predictions under various development scenarios



### Production Log Simulation

- Analysis of dynamic well performance
- Estimating productivity or injectivity of different zones
- Identify problems associated with wells
- Evaluating stimulation jobs
- Evaluation of completion jobs



### CORES AND CUTTINGS SAMPLE ANALYSIS

- Biostratigraphic analysis
- Sedimentology analysis
- Geochemical analysis
- Core analysis



## Recruiting Services



**Staff Augmentation:** Our innovative solution to support your growth for a specific initiative by providing off site/on site consultants to achieve operational excellence within your group.

**Enterprise Recruiting Process Outsourcing:** Enterprise RPO solution manages all aspects of the talent acquisition process from position scoping to on-boarding. We customize a solution to meet your needs and partner with you across the life cycle of your HR strategy.

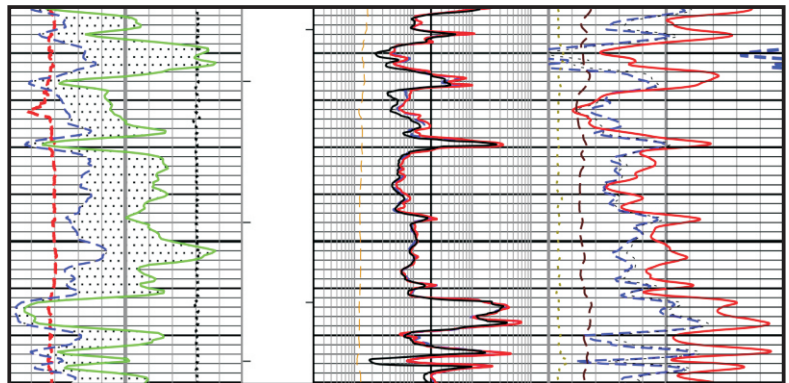
**Co-sourcing:** We work in conjunction with your HR team to meet the recruiting needs of your organization

**Our expertise lies in recruiting & staff augmentation of individuals with professional experience in the following disciplines:**

President	Land & Legal Personnel	Production Engineer	Field Engineer /Specialist	Rig Personnel & Equipment Operator
Vice President	Geoscience Personnel	Completions Engineer	Petro-Physicist & Log Analyst	Sales Manager
Exploration Director/Manager	Petroleum Engineer	Reservoir Engineer	Technicians (Geology, Reservoir, Drilling, Engineering)	HR & Accounting Personnel
Operations Manager	Operations Engineer	Drilling Engineer	Health, Safety & Environment Professional	Sales Engineer

## Well Log Digitizing - Starting at \$18/Well

We use NeuroLog's state of the art digitizing system to provide you with reliable and quality data. Unique quality improvement, editing and validation procedures built into the system assure that your digital log data is completely verified.



### Data Input

- **Scanned Images:** We accept any standard color, grayscale, or b/w TIFF, JPEG, PDF or BMP as input
- **Physical Logs:** We can scan logs at a nominal charge of \$10/Well
- **Standard LAS files:** Depth calibrated rasters from industry vendors or other applications
- **Well Header Files:** PI Dwights Fixed 197, HIS Energy Well Fixed 297, GeoGraphix WellBase V2, LAS Headers, GenericASCII or Excel files

### Data Output

- **Vector Files:** LAS 1.2, LAS 2.0, AutoCAD DXF, PETRAASCII Well Data & Tab Delimited ASCII
- **Raster Calibration Output:** NeuraLog Calibrated Rasters, PETRAASCII Log Image Calibration (LIC) & GeoGraphix Depth Registration ASCII (DRA)

